



# River Information Services (RIS)

Multi-Annual Call 2010

TEN-T Info Day  
Brussels, 31 May 2010

Directorate-General  
for Mobility  
and Transport



# Agenda

---

- Inland Waterway Transport Policy
- River Information Services
- Legal Basis for RIS
- RIS Implementation
- RIS further development
- MAP RIS Call 2010

# Inland waterway transport policy

## Integrated Action Programme “NAIADES”

### 1. MARKET

- » Create favourable conditions for services

### 2. FLEET

- » Stimulate fleet modernisation and innovation

### 3. JOBS AND SKILLS

- » Promote jobs and skills

### 4. IMAGE AND PROMOTION

- » Improve image and co-operation

### 5. INFRASTRUCTURE

- » Provide adequate infrastructure
  - **River Information Services**

# River Information Services

---

## What is RIS?

- Harmonised information services to support traffic and transport management in inland navigation enhancing safety, security, environmental friendliness and the quality and efficiency of transport services

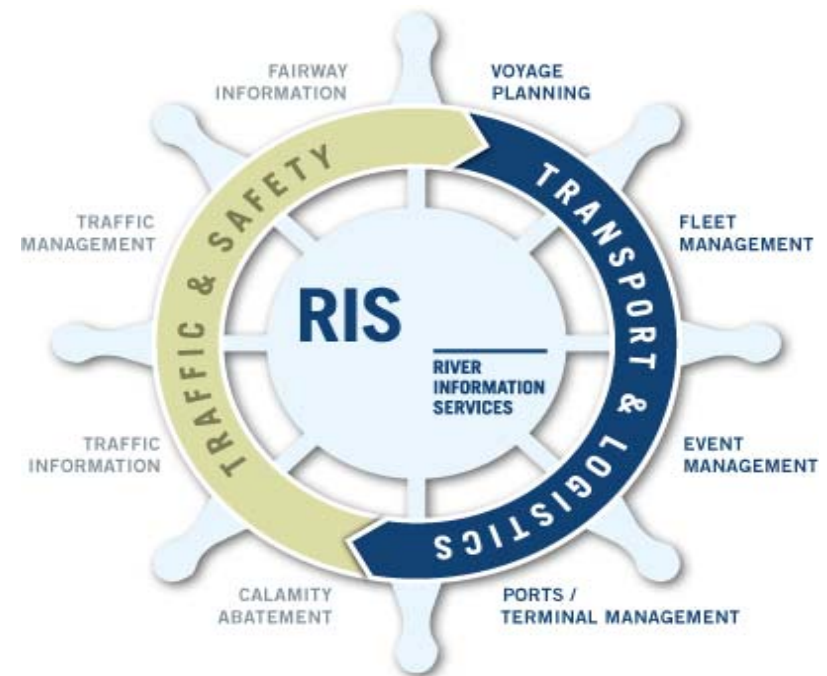
# River Information Services

## Traffic-related services:

- Fairway Information Services
- Traffic information
- Traffic management
- Calamity abatement

## Transport-related services:

- Voyage planning
- Fleet Management
- Event Management
- Ports and Terminal Management



# River Information Services

---

## Enabling RIS technologies

- Inland Electronic Navigational Chart (IENC) / Inland Electronic Chart Display and Information System (Inland ECDIS)
- Inland Automatic Identification System (Inland AIS)
- Electronic Ship Reporting
- Notices to Skippers (NtS)

# Examples of River Information Services

- Fairway Information



Inland ECDIS/IENC

**Notice to skippers**

A new Notice to Skippers of Štátna plavebná správa is available for the Dunaj River, the Dunaj River, the Dunaj River in Slovakia in the original language Slovakian, which has been compiled by Štátna plavebná správa.

**The fairway and traffic related message no 72/01 in the year 2005.**

Concerning Blockage caused by Work is valid between 30 September 2005 and 4 October 2005 for All in All directions.

from 30 September 2005 until 4 October 2005 between 07:00 o'clock and 11:00 o'clock following limitation is valid for the River Dunaj, Strom-km 1862.0 bis 1862.0: Partial obstruction along the Left of the fairway.

from 30 September 2005 until 4 October 2005 between 13:00 o'clock and 18:00 o'clock following limitation is valid for the River Dunaj, Strom-km 1862.0 bis 1862.0: Partial obstruction along the Left bank of the fairway.

from 30 September 2005 until 4 October 2005 between 07:00 o'clock and 11:00 o'clock following limitation is valid for the River Dunaj, Strom-km 1865.0 bis 1865.0: Blockage along the All of the fairway.

from 30 September 2005 until 4 October 2005 between 13:00 o'clock and 18:00 o'clock following limitation is valid for the River Dunaj, Strom-km 1865.0 bis 1865.0: Blockage along the All of the fairway.

Additional text in national language: V uvedených časových intervaloch bude zastavená plavba na danom úseku Dunaja z dôvodu odstraňovania plavebnej prekážky - nánosu v strede plavebnej dráhy. Práca bude vykonávať plávajúci stroj BD Poväzba, ktorý bude označený optickou signalizáciou.

Notices to Skippers

**RIS Message**

A new RIS message of BMVIT is available for the in Austria in 12.09.2005 at 13:41.

**The fairway and traffic related m**

published by the Schiffsaufsicht Hainburg concerning Dre... There exists a/an Additional duty to report via VHF 16, Bagger DREI GEBRUEDER. On Workdays from 19.09.2005 until 21.10.2005 between 05:00 o'clock and 20:00 o'clock following limitation is valid for the Fairway Donau Strom-km 1879.1 to 1892.1: No passing. On Workdays from 19.09.2005 until 21.10.2005 between 05:00 o'clock and 20:00 o'clock following limitation is valid for the Fairway Donau Strom-km 1879.1 to 1892.1: No overtaking.

**Additional text in national language:**  
Talfahrer haben bei Strom-km 1881 über UKW Schiffsfunk, Kanal 16, mit dem Baggerschiff "Drei Gebrueder" Kontakt aufzunehmen. Dies gilt Montag bis Freitag in der Zeit zwischen 05:00 und 20:00 Uhr.

# Examples of River Information Services

- Tactical Traffic Information



Inland AIS and Inland ECDIS

# Examples of River Information Services

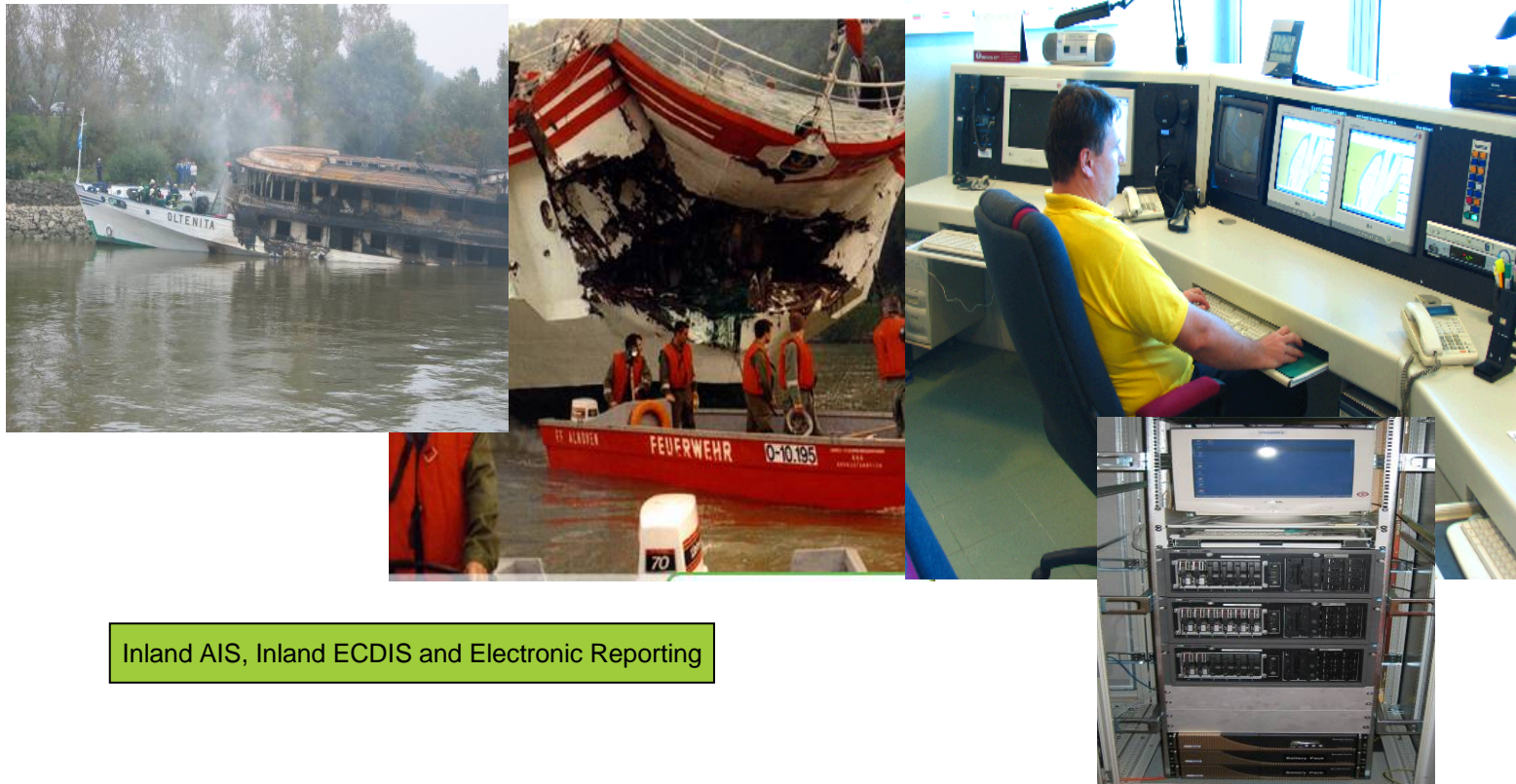
- Traffic Management



Inland AIS, Inland ECDIS

# Examples of River Information Services

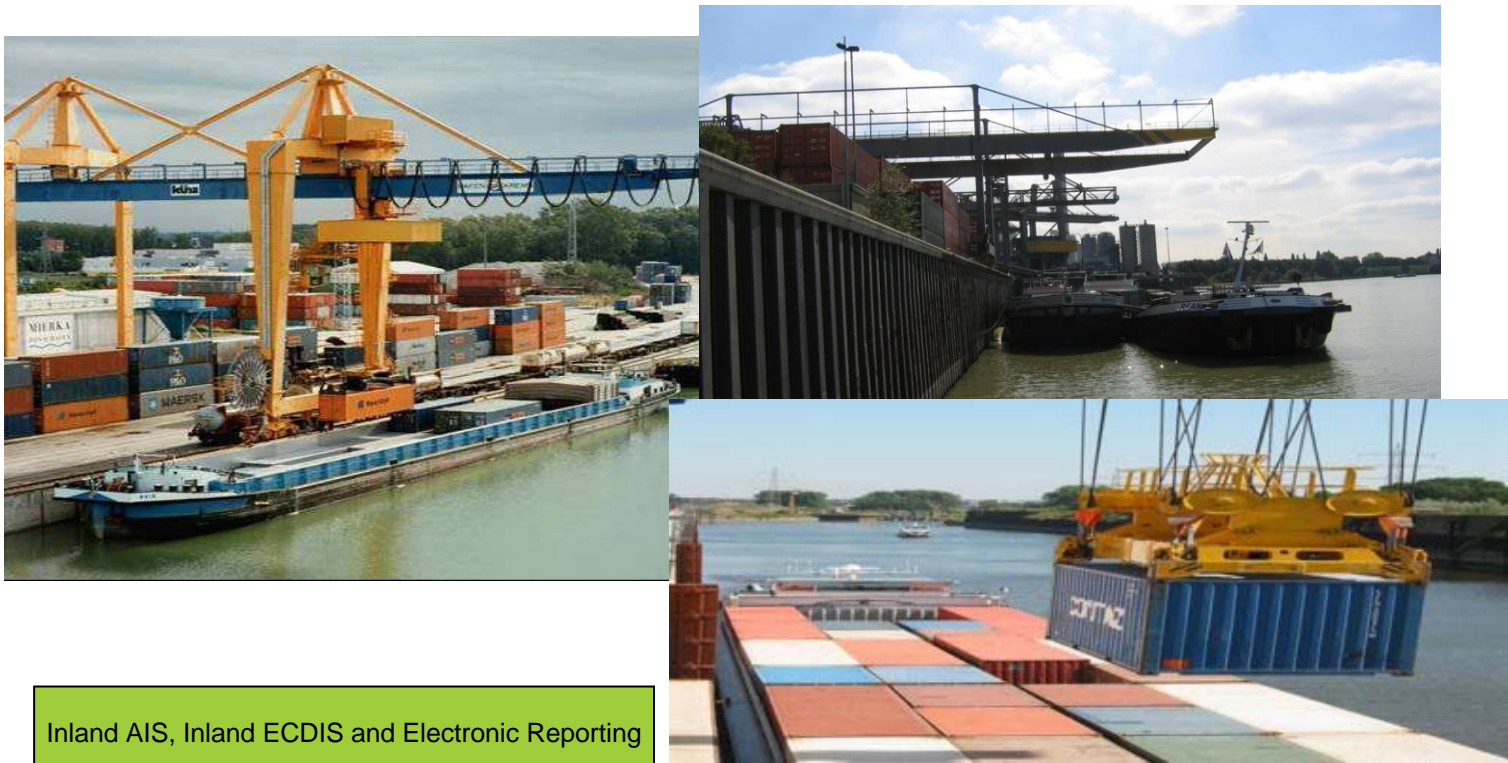
- Calamity Abatement Support



Inland AIS, Inland ECDIS and Electronic Reporting

# Examples of River Information Services

- Information for Transport Logistics



# River Information Services

## User groups and services

### Services for skippers

- Electronic Navigational Charts / Inland ECDIS
- Information on nautical conditions (fairway, obstructions, water level, etc.)
- Real time traffic information
- Electronic reporting of cargo and voyage
- Electronic pre-announcement at locks and harbours

### Services for authorities

- Real time traffic monitoring (tracking and tracing)
- Analysis of accidents
- Exchange of safety related messages
- Electronic vessel register
- Electronic lock management
- Reception of electronic cargo reports
- Border surveillance

### Services for logistic users

- Electronic cargo documents
- Data for fleet management
- Data for voyage planning
- Fairway conditions
- Water level forecast
- Availability of locks
- Calculations of arrival times

# Legal Basis for RIS

**EU RIS Directive (2005/44/EC)**

**Commission Regulation 414/2007**  
concerning the technical guidelines for the planning, implementation and operational use of RIS (RIS Guidelines)

**Commission Regulation 415/2007**  
concerning the technical specifications for vessel tracking & tracing system (Inland AIS)

**Commission Regulation 416/2007**  
concerning the technical specifications for Notices to Skippers (NtS)

**Commission Regulation 164/2010**  
defining the technical specifications for electronic ship reporting (ERI)

**Draft Commission Regulation**  
defining the technical specifications for Inland ECDIS

**IRIS Europe Documentation**  
Technical and Administrative Agreement for the international data exchange  
**TAA & R2D2**

**Expert Group**  
Tracking & Tracing

**Expert Group**  
Notices to Skippers

**Expert Group**  
Electronic Reporting International

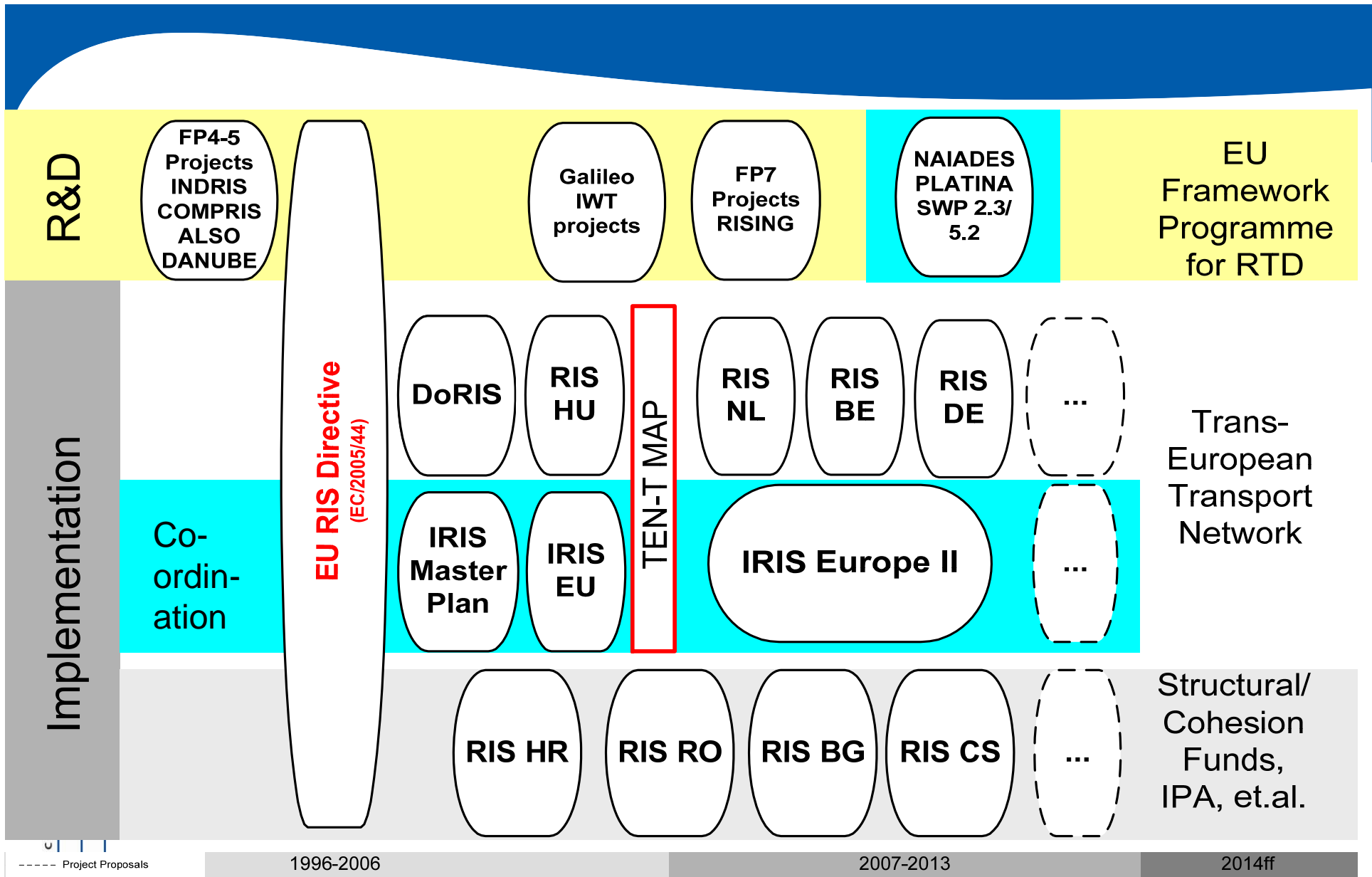
**Expert Group**  
Inland ECDIS

## “what”

- **Applicability**
- **Responsibilities of Member States**
- **Minimum requirements for RIS**
- **Services to be provided**
- **Technical specifications to be applied**

## “how”

## “who”



# RIS implementation

# RIS Implementation - TEN-T (MAP)

- Financial Framework 2007 – 2013
- RIS as part of the multi-annual programme (MAP) of TEN-T
  - » budget programmed for RIS = €50 m
  - » co-funding up to 20% for works, 50% for pilot studies
- Four calls planned (indicative) – 2008, 2010, 2011, 2012
- 1<sup>st</sup> call for proposals closed in June 2008
  - » Budget allocated to 1st call = €16 m
  - » 6 projects funded as a result of the 1<sup>st</sup> call

# RIS Implementation - TEN-T (MAP)

- Projects resulting from the MAP RIS Call 2008
  - » Implementation of RIS on the Westerscheldt river (BE/NL)
  - » Deployment of Inland AIS transponders (NL/DE)
  - » Study and implementation of AIS monitoring network (NL)
  - » Implementation of RIS in Flanders (BE)
  - » Implementation of Fairway Information Services (NL)
  - » Co-ordinated implementation of RIS – IRIS Europe II (Partners: AT, BE, BG, CZ, FR, HU, NL, RO, SK; Co-operation partners: DE, HR, RS, UA)

# RIS further development

Several European projects are addressing the further enhancement of RIS

- Implementation of a legal basis for international data exchange
- Harmonised standards for Quality of Services
- Harmonised reference data management
- European hull database
- Use of RIS for logistics purposes and in logistic chain management

# MAP RIS Call 2010

---

- General objectives and priorities
  - » To foster the deployment of RIS enabling intelligent infrastructure and the provision of RIS both in a harmonised and inter-operable way

# MAP RIS Call 2010

---

- Specific objectives and priorities – technical, organisational and legal
  - » Installation of on-board equipment and of shore-based infrastructure
  - » Testing and validation of the technical feasibility, interoperability and compatibility of technologies, systems, services and applications
  - » Fine-tuning and further enhancement of technologies, systems, services and applications

# MAP RIS Call 2010

---

- Specific objectives and priorities – technical, organisational and legal cont.
  - » Implementation of (new) services, e.g. for transport management purposes
  - » Provision of feedback and contribution to the maintenance and amendment of the technical specifications
  - » Further development and application of concepts such as for cross border data exchange

# Additional Information

---

- TEN-T projects:

[http://tentea.ec.europa.eu/en/ten-t\\_projects/ten-t\\_projects\\_by\\_transport\\_mode/ris\\_river\\_information\\_services.htm](http://tentea.ec.europa.eu/en/ten-t_projects/ten-t_projects_by_transport_mode/ris_river_information_services.htm)

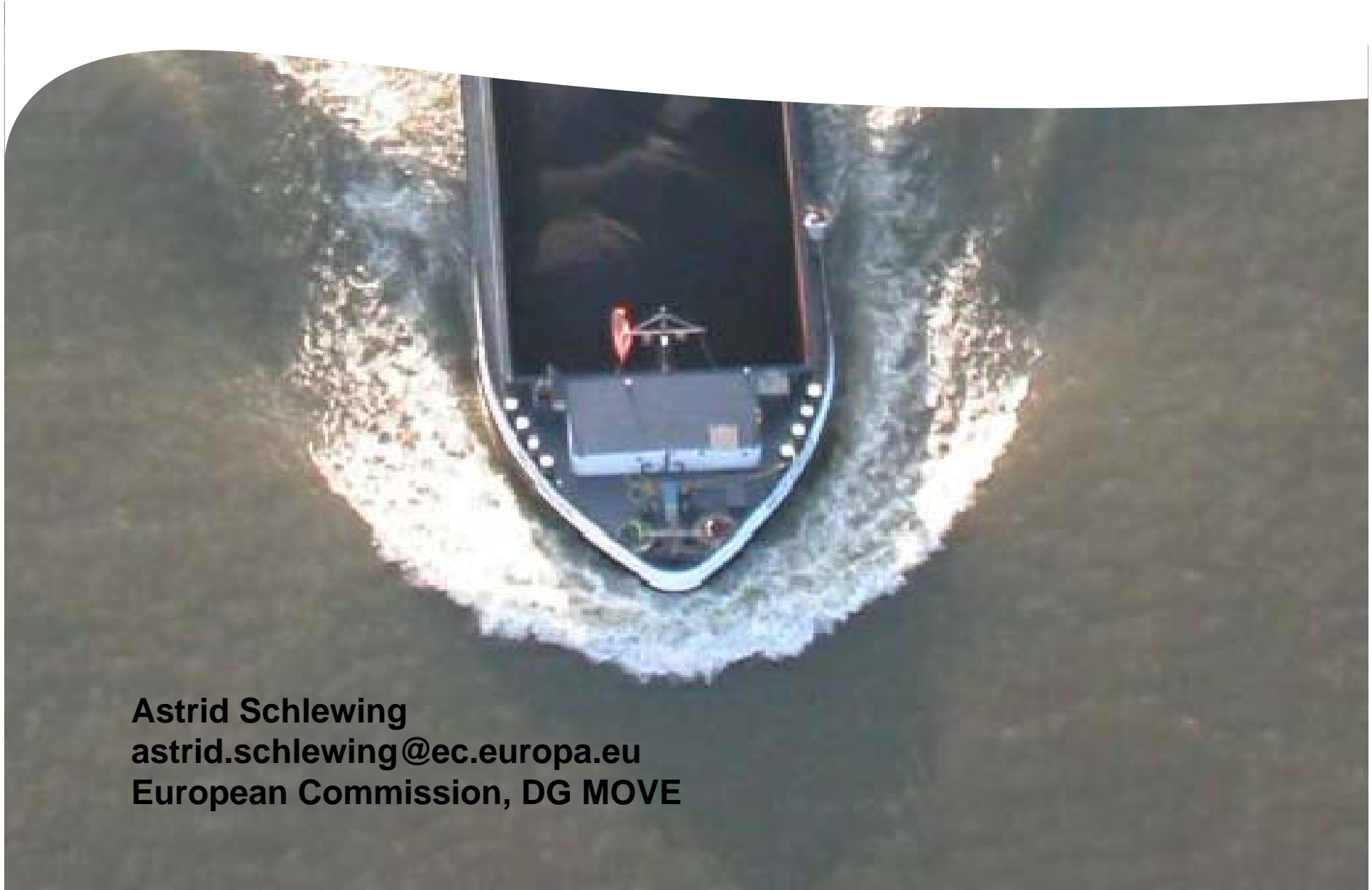
- RIS brochure:

[http://www.transport-research.info/Upload/Documents/200607/20060720\\_111729\\_87595\\_RiverInformationServices.pdf](http://www.transport-research.info/Upload/Documents/200607/20060720_111729_87595_RiverInformationServices.pdf)

- DG MOVE:

[http://ec.europa.eu/dgs/transport/index\\_en.htm](http://ec.europa.eu/dgs/transport/index_en.htm)

**Thank you for your attention**



**Astrid Schewing**  
**[astrid.schewing@ec.europa.eu](mailto:astrid.schewing@ec.europa.eu)**  
**European Commission, DG MOVE**